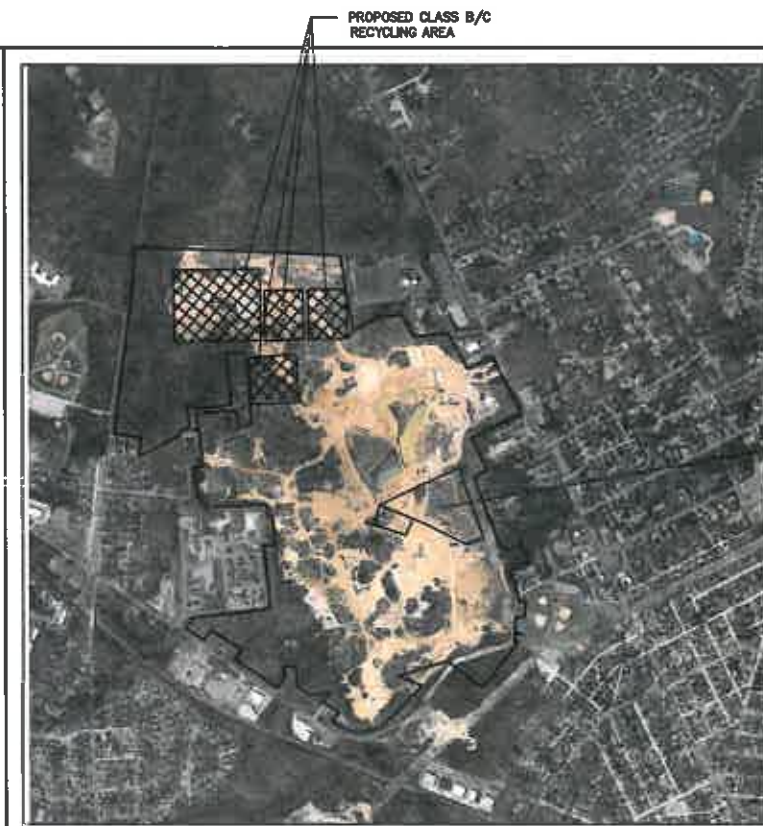
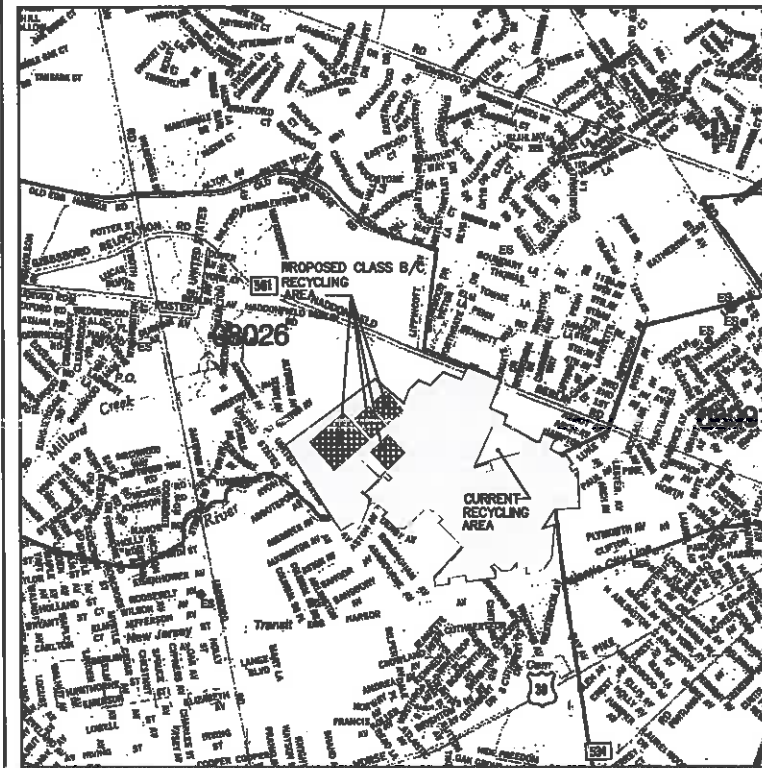


# TRIBOROUGH-SAND and STONE, INC CLASS B/C RECYCLING FACILITY RELOCATION OF FACILITY

OWNER/APPLICANT: JAMES D. MORRISSEY, INC.  
9119 FRANKFORD AVENUE  
PHILADELPHIA, PA 19114

MUNICIPALITY: TOWNSHIPS OF BERLIN AND VOORHEES  
BOROUGH OF LINDENWALD AND GIBBSBORO  
COUNTY: CAMDEN  
STATE: NEW JERSEY  
TOTAL SITE SIZE: 395.50 ACRES  
AREA OF PROPOSED CLASS B/C RECYCLING FACILITY: 39.80 ACRES



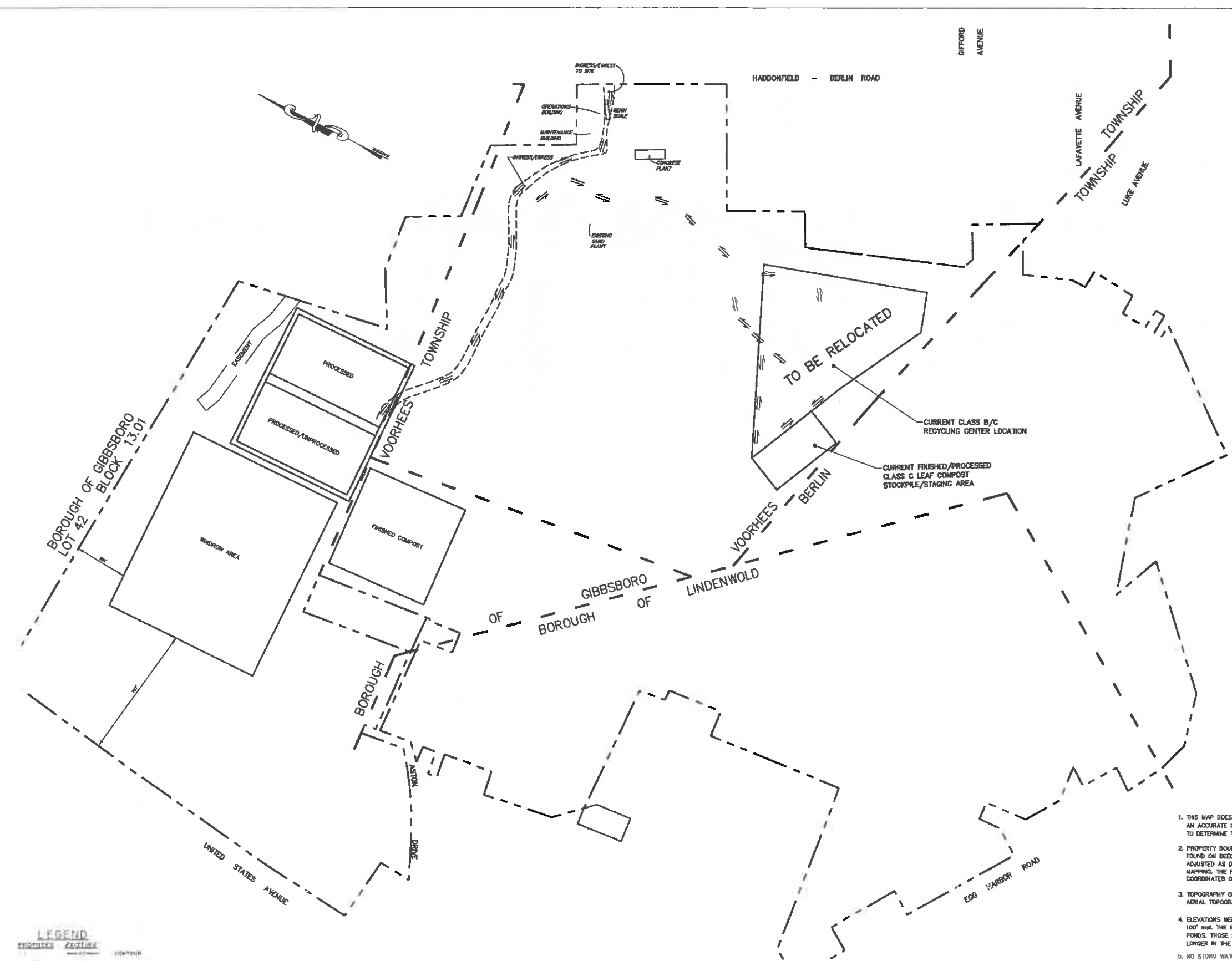
RELOCATION OF FACILITY  
TRIBOROUGH-SAND and STONE, INC  
CLASS B/C RECYCLING FACILITY

COVER SHEET

DATE: 10-10-2019	SCALE: AS SHOWN	DRAWN BY: J.M.
DRAWN BY: J.M.	PROJECT NO: 19026	SHEET NO: 1 OF 3

TIMBERLAND ENGINEERING  
208 BODY PLACE RD.  
WILMINGTON, NJ 08098

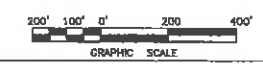
PAUL V. MORRILL, P.E.  
NJ LICENSE NUMBER 937048



1. THIS MAP DOES NOT REPRESENT A SURVEY OF THE PROPERTIES IN QUESTION. AN ACCURATE IDENTIFICATION OF THE PROPERTIES WOULD NEED TO BE ESTABLISHED TO DETERMINE THE EXACT AMOUNT OF PROPERTY OWNED BY THE APPLICANT.
2. PROPERTY BOUNDARIES SHOWN ON THIS PLAN WERE DERIVED FROM INFORMATION FOUND ON DEEDS SUPPLIED BY THE OWNER. PROPERTIES WERE PLOTTED THEN ADJUSTED AS DEEMED APPROPRIATE TO PHYSICAL EVIDENCE FOUND ON THE AERIAL MAPPING. THE FINAL BOUNDARY CORNERS WERE THEN PLOTTED TO DETERMINE COORDINATES OF ALL POINTS.
3. TOPOGRAPHY ON THIS SHEET WAS PREPARED BY AEROGAPHY INC., BASED ON AERIAL TOPOGRAPHY TAKEN IN THE SPRING OF 1991.
4. ELEVATIONS WERE BASED ON THE WATER SURFACE AT THE TIME BEING AT ELEVATION 100' msl. THE BODIES OF WATER SHOWN ON THESE DRAWINGS WERE FOR SETTLING PONDS. THOSE SETTLING PONDS ARE TRANSIENT IN NATURE AND MOST LIKELY NO LONGER IN THE LOCATIONS SHOWN.
5. NO STORM WATER WILL BE DISCHARGED FROM THIS SITE.

**LEGEND**

	CENTERLINE
	SPUR ROAD
	FRESH LINE
	FENCE
	UTILITY POLE
	STRUCTURE
	WATER LEVEL
	MARCH
	APPROVED BARRICADE



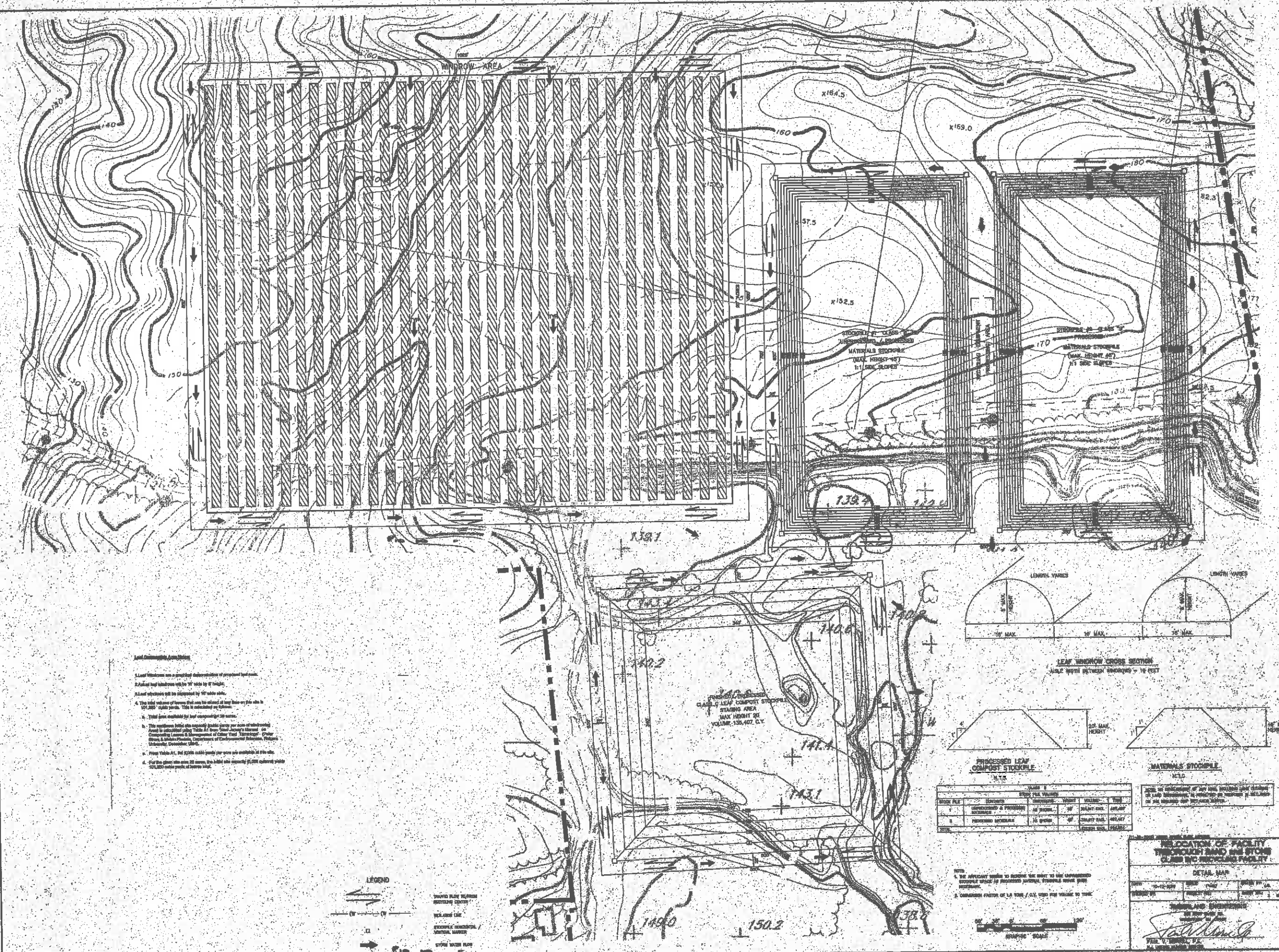
**RELOCATION OF FACILITY  
TRIBOROUGH SAND and STONE  
CLASS B/C RECYCLING FACILITY**

LOCATION MAP

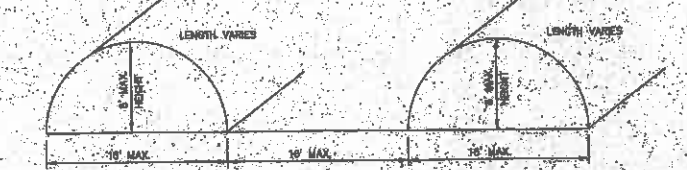
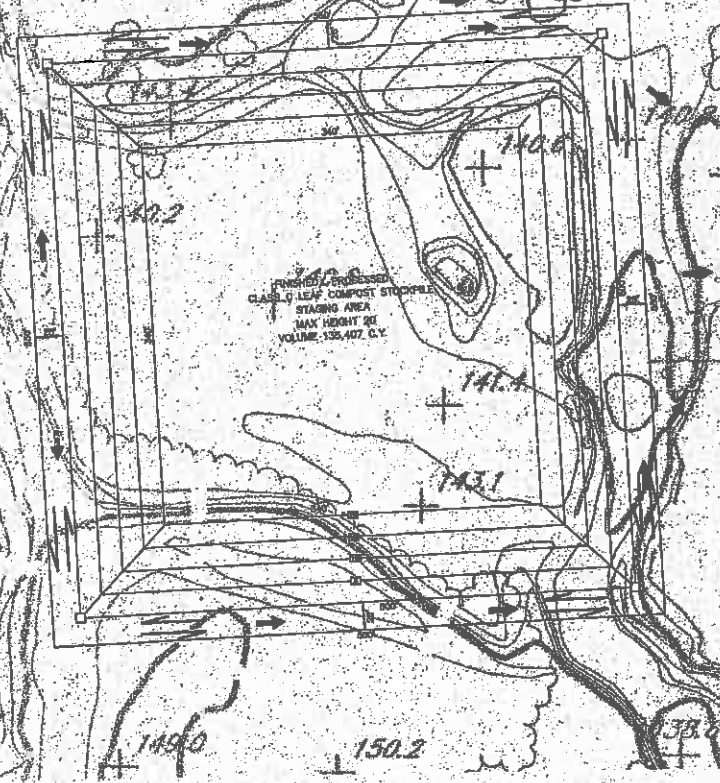
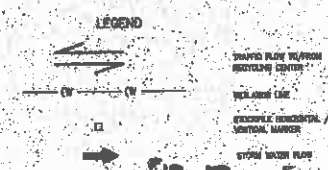
DATE: 10-10-2018	SCALE: 1"=200'	DRAWN BY: JGG
CHECKED BY:	PROJECT NO.:	SHEET NO.: 2 OF 3

**TIMBERLAND ENGINEERING**  
225 BOUY PLAZA RD.  
WICKSTON NJ 08898

PAUL V. MORRILL, P.E.  
NJ LICENSE NUMBER: 262042



- Leaf Window Specifications**
- Leaf Windows are a graphical representation of proposed leaf piles.
  - Leaf window width will be 10' wide by 8' height.
  - Leaf windows will be supported by 40' wide ribs.
  - The total volume of leaves that can be stored at any time on this site is 521,800 cubic yards. This is calculated as follows:
    - Total area available for leaf disposal is 20 acres.
    - The maximum height the existing storage piles per acre of untreated leaves is estimated at 10' (see "Leaf Storage Capacity" on Composting Lessons & Management of Cities Year 2000 Report - Urban Green & Urban Planning, Department of Environmental Planning, Boston University, December, 1996).
    - From Table A1, 10' x 20' x 8' = 160 cubic yards per acre available at this site.
    - For the given site area 20 acres, the total site capacity is 3,200,000 cubic yards of leaves total.



**PROCESSED LEAF COMPOST STORAGE**

ITEM	DESCRIPTION	QUANTITY	UNIT	PRICE	TOTAL
1	Processed Leaf Compost Storage	135,407	C.Y.	1.00	135,407.00
2	Material Storage	100,000	C.Y.	1.00	100,000.00
<b>TOTAL</b>		<b>235,407</b>	<b>C.Y.</b>		<b>235,407.00</b>

**MATERIALS STORAGE**

ITEM	DESCRIPTION	QUANTITY	UNIT	PRICE	TOTAL
1	Material Storage	100,000	C.Y.	1.00	100,000.00
<b>TOTAL</b>		<b>100,000</b>	<b>C.Y.</b>		<b>100,000.00</b>

NOTE: THE APPLICANT SHALL BE RESPONSIBLE TO THE UNAPPROVED STORAGE SPACE IS PROPOSED STORAGE, STORAGE SHALL BE PROTECTED BY A CONCRETE CURB OF 18" HIGH / 6" DIA. USED FOR VEHICLE TO TRUCK.



**RELOCATION OF FACILITY THROUGH BOND AND STONE CLASS INC RECYCLING FACILITY**

**DETAIL MAP**

DATE: 10-10-00  
 DRAWN BY: JAC  
 CHECKED BY: JAC

**LANDSCAPE ARCHITECT**  
 JAC  
 1000 MARKET ST.  
 PHILADELPHIA, PA 19106